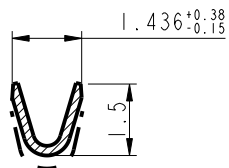


SECTION A-A



SECTION B-B

NOTES:

- 1-Material:phosphor bronze,thickness 0.20
- 2-Finish on contact area:see table
finish on termination:bright tin lead over nickel
- 3-Wire range:24 to 28 AWG
- 4-Max outer dia of wire insulator:1.02 mm
- 5-Current carrying capacity per contact:
 - 3.Amps max when crimped to #24 AWG
 - 2 Amps max when crimped to #26 AWG
 - 1 Amps max when crimped to #28 AWG
- 6-After 5 insertions into connector,
contact retention must be 5 pounds axial load min
- 7-When contact is crimped to 24 AWG,the insulation
support crimped height must be 1.78 mm max to ensure
a proper insertion into housing
- 6-Packaging:Reel of 400 contacts

NOTE : ROHS INFORMATIONS

The LF products meet European union directives and other
country regulations as described in GS-22-008
Terminations plating spec : 2um Nickel min + 2um Sn min
Packaging Spec : see GS-14-920

PART NUMBER	PLATING
86563004065LF	0.76μ Au
86563004065	0.76μ Au
86563004064LF	Flash Au
86563004064	Flash Au



Copyright FCI.

REV F - 2006-04-17

rev	ecn no	dr	date
D	LS06-196	MPE	27/11/2006
E	LS08-0127	MPE	13/05/2008
F	LS08-0167	MPE	2008/08/05
-	-	-	-
-	-	-	-
-	-	-	-

www.fciconnect.com		surface - <input checked="" type="checkbox"/> ISO 1302	tolerance std <input checked="" type="checkbox"/> ISO 406	projection <input checked="" type="checkbox"/> ISO 1101	mm
TOLERANCES UNLESS OTHERWISE SPECIFIED					
Dr	C JARRY	28/01/97	ANGULAR	0.X ±0.3	size A3
Eng			LINEAR	0.XX ±0.1	Scale 10:1
Chr			0° ±2°	0.XXX ±0.05	ECN LS08-0167
Appr			Product family	-	Spec ref
FCI			CRIMP SOCKET		Rev. F
			#Wire 24-28 Ø1.02 max		AWG no C01-8656-0426
			catalog no		customer sheet 1 of 1